



Pulse Jet Dust Collection Systems



Bag House Dust Collectors

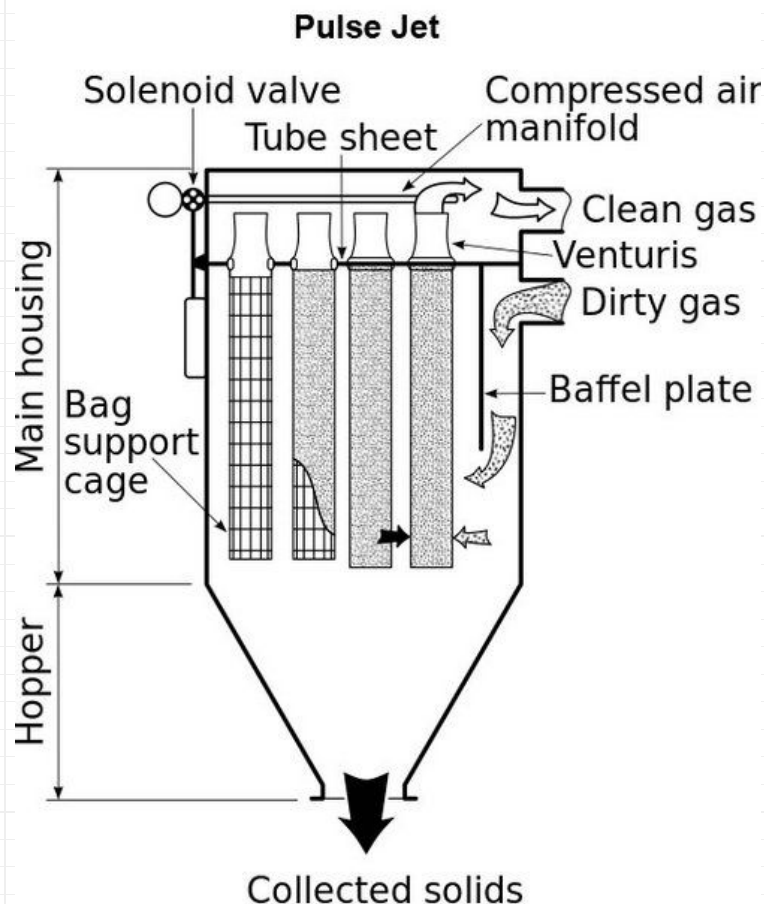
This system reduces contamination in the environment and maintain a healthy surroundings

Operating Principle:

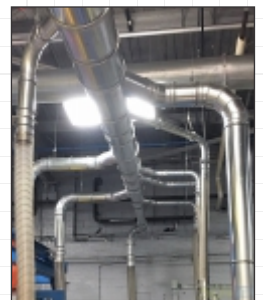
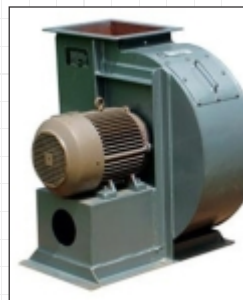
The dirty or contaminated air enters the dust collector through the inlet and passes through a number of filter cartridges/bags (before the contaminated Air passes through the Filter Bag/Cartridge; baffle plate works as a protecting layer to control/retain heavy particles, which protects filter bags/cartridges to get in touch with heavy particles and damage caused by it) which retains the dust particles on the exterior surface while allowing clean air to pass through the outlet. As the collector operates, the collected dust begins to form dust cake, which eventually diminishes the porosity of the filter cartridges. As the pressure drop increases the ventilation volume of the collector decreases.

To maintain a moderate pressure drop, the cleaning cycle is employed to provide continuous cleaning of the filter Bags/cartridges. The cleaning system consists of a Sequential time controller, which actuates Solenoid Valve and the Compressed Air Header. These Compressed Air Header momentary burst or pulse of high pressure compressed air through the blow pipe into the filter tube. This Pulse of air creates reverse flow of air, which expands the filter cartridges to remove the collector dust.

The cleaning procedure occurs on a row-by-row basis therefore only a fraction of total filter air is interrupted for cleaning allowing continuous ventilation. The dust when pulsed from the filter cartridges falls directly into the motorized rotary valve where it is removed.



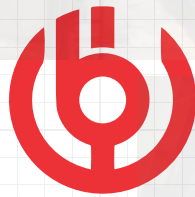
ACCESSORIES



Bezalel Pulse Jet Dust Collection system that caters to various industries' requirement for air quality improvement and enhancing the quality of air released by collecting dust and other impurities from air by removing particulate matter from the air and environment.

Model	Power HP(Kw)	Air flow (m ³ /Hr)	Filter Surface Area (m ²)	Dimension LxBxH (mm)
PJ 15X020	15 (11.25)	6200	20	1800 x 1200 x 6500
PJ 20X083	15 (20)	12000	83	2500 x 1900 x 9000
PJ 25X085	18.5 (25)	13000	85	2500 x 1900 x 9000
PJ 30X120	30 (22.50)	15000	120	2600 x 2500 x 9000
PJ 30X175	30 (22.50)	15000	175	3400 x 2800 x 9500
PJ 60X280	60 (45)	35000	280	5000 x 2400 x 9700

We are also manufacturer of highly customized units with customized ducting solutions along with our dust collectors for your specific dust collection and application requirements.



BEZALEL

Precision Artisans



www.bezalelworks.com

We reserve the right to make technical change or modify the contents of this document without prior notice.
The manufacturer reserves the right to make any changes considered necessary for the purposes of improvement at any time or for any reason without prior notice, in its policy of continuous product development and progress.

© Copyright 2020 Bezalel Works. All rights reserved



BWSD 05.20

Bezalel Works
(An Engineering Division of SK Associate)

14/24A, Marutham Nagar, Edyarpalayam, Coimbatore -641025, TamilNadu, India
O: +91 4222406888 M: +91 8754199888 E: mail@bezalelworks.com